

LD41 MINIATURE RECESSED LED UPLIGHT/ WALL LIGHT




CB | RLE | R + R



Our smallest fitting with a bezel diameter of just 34mm, the LD41 is a very tough, miniature fitting. It can be run up to 1.7W, and comes with a choice of beam angles making it suitable for a wide range of applications.

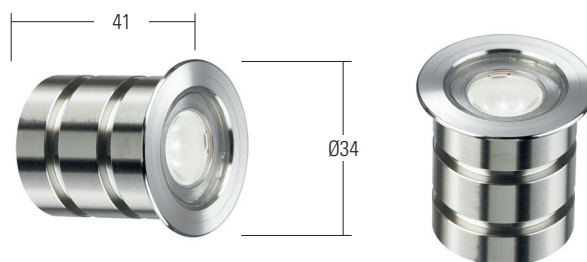
KEY FEATURES

- > High-power C1 engine with NICHIA LED, delivering up to 188 lumens and CRI of 90+
- > Minimal bezel and recess depth producing, excellent diffused beam shape from a range of optics
- > Machined from a solid billet of stainless steel 316, also available in polished & passivated 316 stainless steel and powder coat paint finishes; White (RAL 9016), Black (RAL 9005), Classic Bronze (YM262E), Gunmetal Grey (RAL 7021) or any RAL colour
- > Can be used as an uplight or wall light and specified with frosted glass for indicator applications (a wide beam works best for this effect)
- > Fixing options include O-rings and a first fix sleeve or bonding directly into the mounting surface
- >  Contains our integral moisture guard (anti-wicking barrier), stopping water ingress from going up the cable into the product from incorrect IP-rated connections
- > Not designed for permanent submersion, please use our LD242A
- > Switched, 0-10V, Casambi, DMX, DALI or Mains dimmable drivers available



DIMENSIONS

Dimensions in mm

For detailed fixing dimensions please go to page 3.



WHITE LED ENGINE SPECIFICATION

Engine	 C1	
Beam angles	12°, 31°, 48°, 12° x 36°	
LED manufacturer	NICHIA	
Colour temperature	2200K / 2700K / 3000K / 4000K / 5000K	
Current	350mA	500mA
LED power (Max)**	1.2W	1.7W
Delivered lumens (L ₁₀₀)*	108	141
Lumens per circuit watt	90	83
Forward voltage (V ₁₀₀)	3V	3.2V
CRI (Typ)	93	
Colour consistency	2 SCDM	
Peak intensity	1145 cd	
LED Lumens	157lm	
LOR	0.91	
TM30	RF93	RG99
UGR***	19.2	
LED lifetime	L90B5 at 90,000hrs	
Applications		


This data is based on LD41-C1-500-LW30-NB

*Lumen output data applies to all colour temperatures

**Indicates the nominal power for the LED run at that particular current and includes losses associated with using an 85% efficient driver

***UGR values based on room parameters of 4H 8H, C70 W50 F20

MECHANICAL

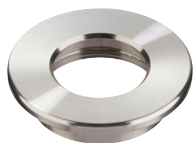
	350mA	500mA
Ambient temperature  55°C	-20°C to 55°C	-20°C to 55°C
Glass	5mm thick borosilicate	
Materials	Machine finish, solid 316 stainless steel	
Weight of product	0.015kg	
IP rating	IP68 - not for permanent submersion (use LD242A)	
Wiring	In-series constant current wiring (pre-wired with 2 x single core cable at a length of 100mm)	

ENVIRONMENTAL

TM65	Available on request	
TM66	2.7	
Repair + Refurbish	 This product is included in our Repair and Refurbish scheme. This offers customers the ability to send back products to us for repair or refurbishment to extend their life without having to buy new fittings.	
RLE (REPLACEABLE LIGHT ENGINE)	  Visit page 4 for replacement parts	

AVAILABLE FINISHES

Please refer to our finishes guide for full details



316 STAINLESS STEEL

- > Marine grade 316 Steel
- > Standard machined finish
- > Extremely durable
- > Passivation recommended for marine environments to prevent corrosion and build up of brown stains caused by oxidation
- > Interior & exterior use



POLISHED & PASSIVATED 316 STAINLESS STEEL

- > Marine Grade 316 Steel
- > Mirror like finish
- > Extremely durable
- > Passivated to extensively prolong resistance to corrosion and brown stains caused by oxidation in marine environments
- > Interior & exterior use



PAINT FINISH - POWDER COAT

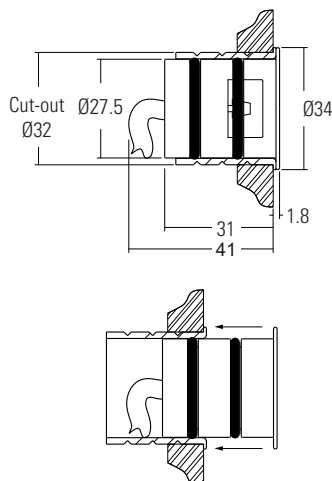
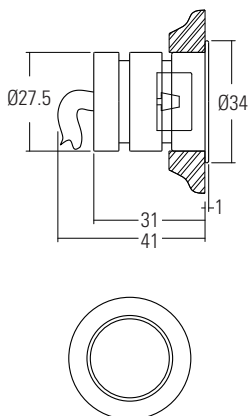
- > White (RAL 9016), Black (RAL 9005), Classic Bronze (YM262E), Gunmetal Grey (RAL 7021) and other RAL colours available
- > Smooth matt texture unless stated otherwise
- > Not recommended for footlights in high traffic areas
- > Interior & exterior use

DIMENSIONS AND FIXING ACCESSORIES

Dimensions in mm

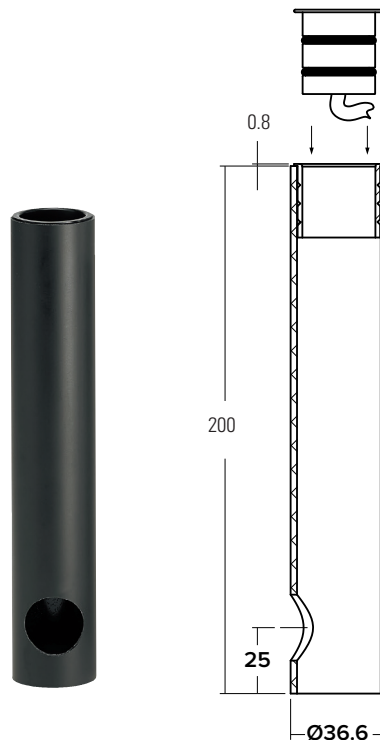
/480 O-rings and sleeve

A more robust and water tight method of fixing, for in ground applications.



/480GT Ground tube

The in-ground tube has been designed for applications where a recessed uplight is required in soil or gravel terrains. The tube can be buried with the necessary wiring, and then the fitting installed after the landscaping work has been completed. It is supplied with the fixing sleeve bonded into the tube, and can be cut down on site.



RLE - REPLACEABLE LIGHT ENGINES



What is RLE

On the surface, RLE is LightGraphix's answer to the Circular economy question that is facing many industries at the moment. However for us, RLE is an ethos; a commitment that LightGraphix will factor in the principles of good circular design into all of its future product design. It allows us to offer luminaires that contain replaceable, energy-efficient light engines. This gives customers the ability to refurbish existing lighting installations rather than having to replace the entire luminaire. This will fall into two types of refurbishments: replaceable, and repairable.

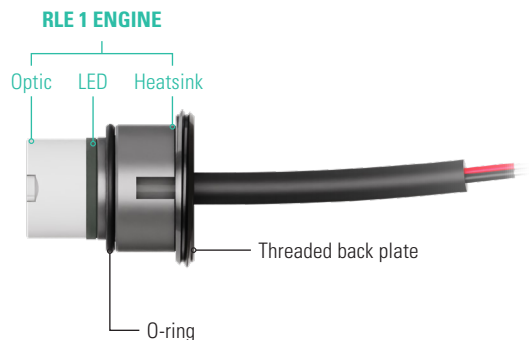
RLE Engines

Repairs can be conducted on any site worldwide, or in our factory, with a small tool. Simply swap out the singular modular LED insert, and replace it with another, along with a new optic, which are both supplied by us. The warranty provided with the product varies based on who is performing RLE repairs. There are three types of RLE engine, categorised based on the size of the product. RLE1 is the smallest, with RLE3 being the largest.



LD43DR RLE REPLACEMENT PARTS

Please use the configurator below to specify your replacement engine and optic. If you are unsure of your original specifications, please check the label on your LightGraphix fitting, or get in touch with our sales team. Installation sheets will be supplied with the new components.



RLE Engine		LED Colour		Beam Angle		Accessories	
RLE1/							
RLE 1 ENGINE	RLE1/	Super Warm White (2200K)	/LW22	Narrow beam 16mm optic	RLE/OP-16/NB	O-ring	RLE/OR2
		Extra Warm White (2700K)	/LW27			Threaded back plate	RLE/TBP
		Warm White (3000K)	/LW30				
		White (4000K) - on request	/LW40				
		Cool White (5000K)	/LW50				

ORDER CODES & OPTIONS

Example: LD41-C1-700/LW30/MB/316 Stainless Steel/480

Light Engine & Drive Current

LED Colour

Beam Angle

Finish

Fixing & Accessories

LD41 - / / / /

Ambient temperature key: ● 55°C

WHITE LED ENGINES



1.2W LED at 350mA	LD41-C1-350
1.7W LED at 500mA	LD41-C1-500

Super Warm White (2200K)	/LW22
Extra Warm White (2700K)	/LW27
Warm White (3000K)	/LW30
White (4000K) on request	/LW40
Cool White (5000K)	/LW50
Red	/LR
Green	/LG
Blue	/LB
Amber	/LA

12° Narrow spot	/NB
31° Medium	/MB
48° Wide	/WB
12 x 36° Oval	/OB

	316 Stainless Steel
	Polished & Passivated 316 Stainless Steel (for marine environments)
	Powder Coat Black (RAL 9005)
	Powder Coat Classic Bronze (YM262E)
	Powder Coat Gunmetal Grey (RAL 7021)
	Powder Coat White (RAL 9016)
	Powder Coat RAL

	/480
	/480GT

Drivers
Use with 350mA & 500mA constant current LED drivers We have a range of dimmable LED drivers DMX and DALI compatible. Please see the downloads section on our website.